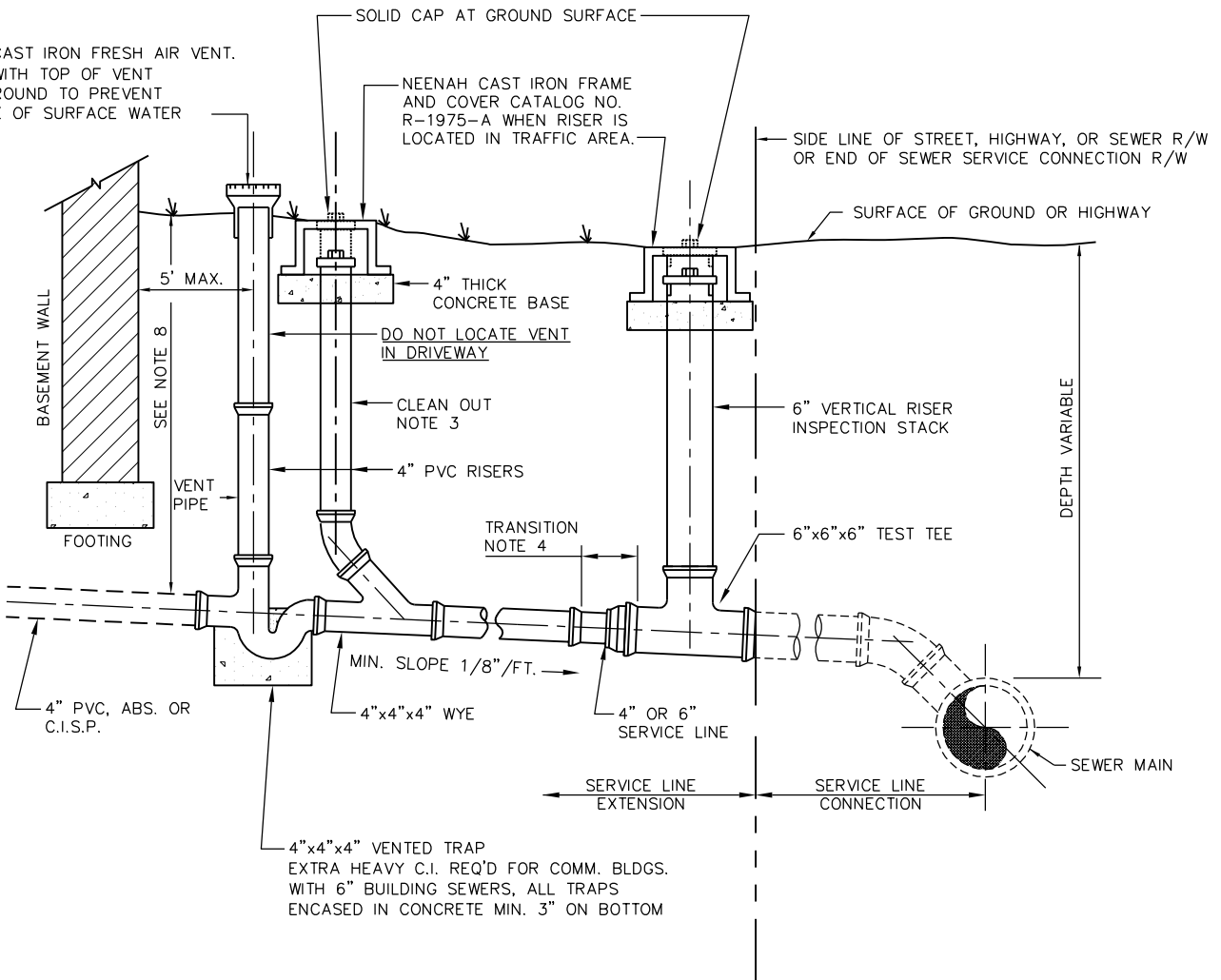


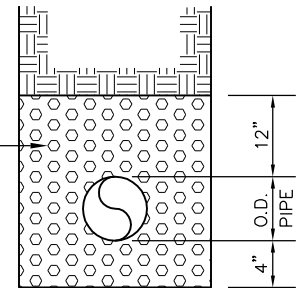
PVC OR CAST IRON FRESH AIR VENT.
INSTALL WITH TOP OF VENT
ABOVE GROUND TO PREVENT
ENTRANCE OF SURFACE WATER



NOTES:

1. THE ENTIRE INSTALLATION MUST BE INSPECTED AND APPROVED BY THE MATR REPRESENTATIVE AND THE ALLEGHENY COUNTY HEALTH DEPT.
2. ALL MATERIALS MUST BE INSTALLED IN ACCORDANCE WITH THE ALLEGHENY COUNTY PLUMBING CODE AND IN ACCORDANCE WITH THE MATR RULES AND REGULATIONS.
3. BEFORE WORK IS STARTED A PLAN MUST BE FILED WITH THE ALLEGHENY COUNTY HEALTH DEPT. PLUMBING DIVISION AND AN APPLICATION MUST BE FILED WITH MATR
4. CLEAN OUTS SHALL BE INSTALLED AT 50' MAXIMUM INTERVALS FOR 4" LINES OR 100' MAXIMUM INTERVALS FOR 6" LINES AND AT CHANGES OF DIRECTION GREATER THAN 45°.
5. TRANSITION BETWEEN 4" WYE AND 6" PIPE MUST BE MADE IN 18" MAXIMUM. (APPLICABLE TO LATERALS WHICH ARE 6" IN SIZE DOWNSTREAM OF TRANSITION.)
6. VERTICAL RISER INSTALLED AS REQUIRED BY THE MATR RULES AND REGULATIONS.
7. ALL PIPING AND FITTINGS SHALL BE SDR 35 PVC OR SCH. 40 PVC OR STD. WEIGHT CAST IRON.
8. THIS DETAIL (EXHIBIT I) IS APPLICABLE TO NEW BUILDING CONSTRUCTION WHERE LATERAL IS LESS THAN 6' DEPTH AND CONNECTIONS TO ALL EXISTING BUILDINGS.
9. ANY LINES INSTALLED IMPROPERLY OR COVERED WITHOUT INSPECTION MUST BE REMOVED OR UNCOVERED AT THE PROPERTY OWNER'S EXPENSE.

PENN D.O.T.
NO. 57 COARSE
AGGREGATE



TRENCH SECTION

**EXHIBIT I
MATR STD. S-03**

**THE MUNICIPAL AUTHORITY OF
THE TOWNSHIP OF ROBINSON**

**SANITARY SEWER
LATERAL CONNECTION**

NIRA Consulting Engineers, Inc.

DATE: 02-05-08

FILE: MATR S-06